

LIQUIDATION

24 MW Biomass Power Plant

Boralex/Sherman - 58 Sherman Lumber Company Road Stacyville, ME 04777



NIAGARA Worldwide



For additional
information call
Eric Spirtas
314-780-3742



NIAGARA Worldwide
developing from history

Niagaraworldwide.com



Main Air Cooled-#2,#3, #4

GEA P.O. 1953-01688, Project # 85-167 (Atlantic-Gulf)

- Env. Elements Corp. Fans: Enelco, Fiberglass, 12' lgth., (Variable Pitch)
- Louis Allis Motors #3 & #4: "Pacemakers" 200/50 hsp., 1785/895 rpm., 447TSD frame, 575v. Vert. Mount, (variable speed, dual wound)
- Flenda Gearboxes #3 & #4: XSBN-250, 1785/133 ratio, (flg., mounted)
- ABB Invertors #3 & #4: 200 hsp., 575v., 216A rating P/N ACS800-U4-0320-7-D150
- ABB Motor #2: Model: 9K 449TSHFSHFS7201AA-W6W, 200/50 hsp., 1790/890 rpm., 575 v., 60 Hz., S/N MU420140-9/10, Frame: 447/9 TSD
- Sumitomo Gearbox #2: " Paramax 7", Size: SM7070P2-RLV-14, S/N HO 5663, Input 890/1750, Hsp. 521/1750, Ratio 14.118-1

Main Air Cooled - #1 (Deflagrometer)

GEA P.O. 1953-01688, Project # 85-167 (Atlantic-Gulf)

- Env. Elements Corp. Fan: Enelco, Fiberglass, 12' lgth (Variable Pitch)
- Louis Allis Motor: "Pacemaker" 100/25 hsp., 1780/890 rpm., 405TSD frame, 575v. Vert. Mount, (variable speed, dual wound)
- Flenda Gearbox: XSBN-200, 1785/133 ratio, (flg., mounted)
- ABB Invertor: 100 hsp., 575v., 95A rating, P/N #AC800-U4-0320-7-D150

Steam Jet Air Ejector

Kinema Model 2-004-0-OSS

Cooling Tower

Baltimore Aircoil Co. Series 3000, Model: 3547-2HR, S/N 86-7415D, P.O. # 1953-02403, Cap. 550 gpm., 94 -80 degrees H2O

- BAC Fan, 8-Blade Vari- Pitch, 7 Ft. Dia. Overall
- Reliance Electric Fan Motors :10 hsp., 230/460V., 3 PH., 1760 RPM., 215T FR., # P21G7421-EH
- Reliance Electric Invertors: SP500, MN-ISU41010, 10 Hsp., Input/Output-380-460 VAC, IM D2-3356-3, Encl. Type 1, S/N CS1SU141137 V 008 LA
- Drive Belts: 4BP103

Gland Seal-Turbine

Cataract Steel Indust. 8.625" dia. X 139.995 lg., 150 tubes (rated 200 psi.), shell rated 850 psi. Dwg. # W082705-01T



NIAGARAWorldwide
developing from history

Niagaraworldwide.com



PRESSURE VESSELS (MAIN)

Steam Drum

Zurn Industries Size: 43" ID. X 21'-9" (plus heads),
Dwg. #3-3026

Mud Drum

Zurn Industries Size: 4'-8-1/2" X 20'8" lg., (plus
heads)

Deaerator

ASC Manf. Size: 7' O.D. X 15-4" lg., Model 200M-10T-
HBS, Dwg. # 200M-HBS-D1, D.P. 100, 150 PSIG Rat-
ing, Outlet cap. 200,000 lbs./hr. , 4597 gals.

Capacity, P.O. # 1953-01644, S.O. # 206-6026

Hot Well

No Name Tag or Data found

TANKS

Feedwater Tank (Demineralized H2O)

Buffalo Tank Div. Size: 13' dia. X 19'-2" h., 15,000
gals. Cap., BTA #NSNO 3659, # 07M110, -Dwg. #M-
9583, Yr. 1986

Clearwell (Potable H2O)

Buffalo Tank Div. #07M1010, 22,000 gal. capacity,
BTD # FS-4410, Year 1986

Decant Tank

Ershigs Size: 2000 gal. capacity, P/N D-86004,
Resin-Atlac 580 Mat'l.

Caustic Tank

Ershigs 6' Dia. X 11' Hgth., # 07M1260, Resin Atlac
580 Mat'l., P/N D-86002-B, 200 gal Cap., Year 2/86

HCL Tank

Ershigs/Kenway 6' Dia X 12' Hgth., Dow Durakane
#11-45 & C-Vail (inner shell) Mat'l., Dwg. # K-333

Neutralization Waste Water Tank

Size: 75" dia. X 70" hgth., 1200 gals. Cap., fiberglass
construction

Concentrated Waste Water Tank

Ershigs Size: 96" dia. X 82" hgth. (1200 gal. cap.),
Resin-Atlac 580 Mat'l., #D-8600

Rinse Water Tank

Ershigs Size: 2000 gal. capacity, P/N D-86003-A,
Resin-Atlac 580 Mat'l.

Cooling Water Tank

Oil Storage Tanks

Buffalo Tank Div. 126" O.D. X 25'-10" Lgth. 16,500
gals. Capacity, Dwg. #W-6060

Reuse Water Tank

Buffalo Tank Div. 144" O.D. X 60' Lgth., 50,000 gals.
Capacity Dwg. #K-5867

Hot Well (Condensate Tank)

Buffalo Tank Div. 13'-6" X 6' Dia., 350 CFT

Process Condensate Tank

Buffalo Tank Div. Item # 07M1130, BTD
#WSNO3658, Capacity 10,000 gals., Yr Built '85



**For additional information call
Eric Spirtas 314-780-3742**



HEAT EXCHANGERS

L.P. Heater

Amttek Type 1-R-4, Size 25-B-168, B/M #5325-A-124, Contract #WU-40534-2, P.O. #1953-01795

H.P. Heater

Ametek 37" dia. X 285" lg., Type 1-R-4, size 25-B-228, B/M #5325-A-123, Contract #WU-40534-1, P.O. #1953-01795

Blow Down

Graham Corp. 16-7/8" dia. X 9-3/8" lgh, Dwg. # 9-4C4C-14S Heliflow Design Press. 1550#

Plant Heat-CB

No Information Found

CONTROL VALVES (MAJOR)

Main Turbine Control

Dresser/Turbodyne Dwg. # LD-175209-N, Date: 6/1/81

Feedwater Regulator

Fisher 1-1/4"-1500 psi/2 min., S/N # 9876750
 • Fisher Actuator: Size 60, S/N #9876750

Main Attemperator

Copes-Vulcan WC-6, Dwg. # 8610-88432-1-1, 3"-300#, Desuperheater
 • Job Ref. 8510-69688 Controller:

Attemperator By-Pass

Copes-Vulcan CV-300, Dwg. # 8617-88433-1-1, Control

• Morin (tyco) Controller: Model 79B-015U-0000-V

Main Attemperator Shut Off

Fisher 1-1/2" CL1500 5625 psi/2 min., Type EHS, S/N 9876746

• Fisher Actuator: Size 40, Type 667, S/N # 9876746

Main Steam ERV

Fisher 2"-CL2500, 9375psi/3 min., S/N #9898136
 • Fisher Actuator: Size 60, Type 667, S/N #9898136

H.P Heater Level Regulator

Fisher 2"- CL300, Type EZ, S/N #9880391
 • Fisher Actuator: Size 45, Type 657, S/N #9880391

Turbine Extraction

- 1st Stage: Gimble, 8"-300 psi, WCB, Cust. Order #T-23457-F, J.O. # 85-14560, NP 1650
- 2nd Stage: Gimble, 6"-150 psi. WCB, Cust. Order #T-23457-G, J.O. # 85-14561, NP 1650
- 3rd Stage: Gimble, 10"-150 psi., WCB, Cust. Order #T-23457-H , J.O. # 85-14562 , NP 1650





Turbine Extraction (2nd Stage)

Grinnell 6" Butterfly " Waffer Type" HP,
#M15W11M50

- Morin Actuator: Dbl. Action, #79B-036U-D000, 40-160 psig.

Dearator Pegging Steam

ValveTechnologies 3"-1500, B8C1-BWYX, Ball

- ValveTechnologies Actuator:

Dearator Makeup (Steam)

Fisher 2" -1500, Type EHS,

- Fisher Actuator: Size 60, Type 667

Deaerator Makeup (Water)

- Fisher Actuator: Size 30, Type 657, S/N #9942370

Deaerator Dump

Fisher 4" CL150, Type ED, S/N # 10014504

- Fisher Actuator: Size 45, Type 667, S/N #10014504

250# Steam

Valve Technologies 2"-300, S/N #9810386, Model B8LISW-STDMorin

- Actuator: 79B-RK023-2-V

Boiler Feed Pump Min. Flow (#1 & #2)

H.P. Heater M.O.V.

Bettis 115 V, Model AS18-004-92002, S/N # 85-8022-1, P/N #AOO15-4AA4AOOAA

SOOTBLOWERS

Rotarys (#1 thru #8), Diamond Power G9B

- G.E. & U.S. Motors Motors: 1/6 hsp., 1725 rpm., EA566CZ frame, TEFC

Retractables (#1 & #2)

Diamond Power IK-520

- Baldor Motors: .6 hsp., 850 rpm., 56CZ frame

Retractable #3

Copes Vulcan T-20E, DWG. # SK-A-33-31736-A

PRECIPITATOR

WAPC-Canada Ridgid (1) Electrode Electrostatic, Model 24/24/4 X 9/10", S/N 3280, Cust. # 1953-13, Date: 10/85

Hopper Augers (#1, #2, #3, #4)

Thomas Conveyor/Lane Supply 9" X 15'-10" with 1/2" pitch-3/8" thick AR 360 flights

- Marathon Motors: 2 hsp., 1735 rpm., 145T frame, TEFC

- Dodge Gearboxes: SCXT 315A

Vibrators, Hopper

FMC Model: V50, 575 volt, Electromagnetic, Dwg. # D164439

Precipitator Inlet Air Heater

Ellson Equipment Co. Girder Heater/Blower Assembly, 40 KW, 575 v., 1200 CFM @ 10" W.C. @ 200 F., DWG. # 163 C

- Baldor Blower Motor: 7.5 hsp., 3450 rpm., 575v., 213T frame, TEFC

- Chicago Blower: Size 13-1/2 Sq. B2

- WAPC Air Filter (Multi- Maze Air Filter), Model #14-18" P/N 14MSGT

Rapper Voltage Controller

Neundorfer Inc. Micro Voltage Control-MVCIII, Job # 9400-0452 DWG. # 16267-22



**For additional information call
Eric Spirtas 314-780-3742**



SAFETY RELIEF VALVES

Superheater

Consolidated 2" X 3"-1500 class, 76,334 lb./hr. Stm Flow Capacity, Type 1727A-2-S, 104,272 # Stm, Flow Capacity, Set Press. 1420

Steam Drum (2)

Consolidated 2" X 3" -1500 class, 104,272 lb./hr. Stm. Flow Capacity, Type 1727A-2-S, • Set Press. 1550 psig.

250#

Consolidated 2"- 300 class, Type #1811KA22, S/N BY00388, Set Press. 300

Turbine Extraction (1st Stg.)

Consolidated 2-1/2" X 4"-300 class, 29,381 lbs./hr. Stm. Capacity, Type # 1811-LA, • Set Press 245

Turbine Extraction (2nd. Stg.)

Lonergan 4" X 6"-250 class, 16,500 lbs/hr. Stm Capacity, Type 1511NA, Set Press. 84.5

Feedwater Pump #1

Consolidated 1-1/2" X 2-1/2"-300 class, 14,619 lbs/hr. Stm. Capacity, Type 1811A

Feedwater Pump #2

Consolidated 4", #1511P, 80 5-96, S/N BY0390, 29,617 PPH-Capacity

Deaerator & PRV

Consolidated 1-1/2" X 2-1/2" -300, 18,808 lbs./hr. Stm. Capacity, Type 1811-JA-22,

• Set Press: 300 TRANSFORMERS (MAJOR):

Main Transformer

General Electric Class: OA/FA/FOA, 3-ph., 60 hz., Voltage rating: 44000Y, 25403-12470Y/7200, KVA rating 13,400 cont. @ 55C-25013@65C, Imp. Volts 7.61%, 44000 - 12470Y volts @ 13400 KVA, # M122462, Total Wght. 71,200 lbs.

• Tank: 2060 gals. Capacity, Type I Oil

Fuel Yard

Westinghouse 3-Phase, RSL oil insulated, Class OA/FA, Volts H.V. 12470, L.V. 575Y/332

• 60 hz., Full Load; 750/840 OA, 862/966 FA, 55/65 C rise, S/N Pat-2095-0101, Tank Cap. 167 gals.

• Imp. 5.72% at 750 KVA 12470-575Y volts, #9725A68, Manf. date 11/85, Total Wght. 5192 lbs.

Precipitator

Westinghouse Class: ONAN 1 ph., 60 hz., 5.8% IMP

• Rectifier: Type-Full wave bridge, 50,000 v.d.c. (full load) 1050 Milliamps DC., D.C. load factor 1.2

• Transformer: 83.7 kva. @ 55 deg. C rise, lv 550v. Norm, hv 66,450v., (no load) lv wdg Curr. 152 A rms, hv wdg Curr 1.26 A. rms, S.O. 05E6406EX, S/N # LM50355, Manf. Date 1985



Boiler House

Westinghouse 3-Phase, RSL oil insulated, Class OA/FA, Volts H.V. 12470 (full load KVA) L.V. 575Y/332, 2500/2800 OA, 60 hz., 3125/3500 FA,

55/65 C rise S/N Pat2096-0101, Manf. Date 11/85, Imp. 5.6% at 2500 KVA 12470 to 575Y

volts, # 9725A69, S/N # PAT-2096-0101

• Tank: 358 gals. Capacity



BREAKERS (MAJOR)

25-90 Breaker General Electric

K-6469384-201, Type FK-339-500, Rating 69,000 Volts Cont., 600 Amps., 60 Hz, Total Wght. 19,000 lbs.

- Renewal Prts. GE 1-11388 C, Brkr. GE-1-11388 C
- Operating Mechanism: Pneumatic # K-6469384-221, Type MA-14, Ope. Press. 150-100 PSIG
- Transformer: Type BR, Class B-10L200, Ref. # L-6193387-031

7-80 Breaker

General Electric # K-6469385-201, Type FK-339-500, Rating 69,000 Volts Cont., 600 Amps. 60 Hz, Total wght. 19,000 lbs

- Renewal Parts GE1-11388C, Breaker GE1-11388C, Bushing GEH-440K
- Operating Mechanism: Pneumatic # K-6469385-14, Type MA-14, Ope. Press. 150-100 PSIG
- Transformer: Type BR, Class B-10L200, Ref. # L-6193387-031

W-1 Breaker (Main)

Westinghouse Type 72.5SP23, Max 72.5 KV Cont., 1200 Amp., 60 Hz., S/N # SO 1-67Y2103, Manf. Date 1985

- Operating Mechanism: Type AA-7, S.O. 67Y2103, Htr. 230 V/1 PH/60 Hz, Control Diagram #1D04225/26, Closing- 90-130 V. (D.C.), Tripping-70-140 V. DC.
- Air Compressor: Jenny, Model F, #F100308202

Generator Breaker

General Electric Type: 100-S, # 0213X0300 G 3, 13,200 volt, 600 amp., 60 CY, 15 KV, Instr. & Prts. GE-1-80768, 9/75

Wood Yard

Westinghouse Order # SE77883, Dwg. # SM857A41 A01 GP1, Style: 7274A62633, 600 Volt, Momentary 40 KA, BIL 95, KV Rate-13.8 Normal, 15 Max.



For additional information call Eric Spirtas 314-780-3742



COMPUTERIZED MONITORING SYS'S

Opacity Monitor

Land Instruments Int'l. Model: 4500, S/N 0395962, MK 11, 100-240 volt

C.O. Monitor

Dynatron Inc. Model: 3100M

Analyzer & Recorder

Ametek Model ASC 369/301-70025, Thermox CEM/O₂, Series 2000, P.O. # WS 50000589

- WCAS CRT Monitor & Computer 486, Dwg. # ASC369-11
- WCAS Analyzer Panel Layout, Dwg. # ASC369-04
- WCAS Probe, Model SP2020HBB, Dwg. # ASC369-07

UPS SYSTEMS

Control Room DCS (Computer Sys.)

APC Silcon, 10-40 KW, 208/480 volt, Model: SL30KF, S/N # WE 0437110238

- Battery Banks #1 & #2, Ultra Power UPX 12 Volt-300 W/FR
- Emergency Power Eng. Transformer-Model CC6T050H575U208, 50 KVA, 575 Volt, 2087/120 Volt Output

DC Turbine Emergency Oil Pumps & Lights

GNB Battery Charger: P-10 (DC) Model: GF120S6, Spec.-N6121A-3, S/N # 485CS75254, Input/Output 120 V.

- PRC Battery Banks #1, #2, #3, Power PRC 1265 S, 12 Volt

MOBILE EQUIPMENT

Truck (Yard)

Ford Motors Co. Model: F150, 4 X 4, Yr. 1996, VIN # 1FTEF14NOTNA31689, Body PK, Title # 5154467, Color: GREEN

Roll Off Truck

Mack Model: DM 690S, S/N 1034, 1800 RPM., 167 HSP., VIN # 1M2B1700XEA001035





MAIN BOILER

Zurn Industries Order # 1572, 2-Drum, bent tube, 200,000 rate (upgraded), 1550 psi @ 1350 F., S/N # 100,789, Nat'l. Board # 19,245, Capacity: 15,132 gals. Or 126,200 lbs. H₂O

Tubes:

- Zurn Furnace: 3" O.D. X .220" min wall
- BTA Superheater (primary & secondary): 2" O.D. X .165"/.200"/.220" min wall
- Zurn Convection: 2-1/2" O.D. X .180" min wall
- Economizer: 2" O.D. X .220" min. wall
- Air Heater: 2-1/2" O.D. X .083" min. wall

Grate System-- #1 & #2

Detroit Stoker Travelgrate Stoker, G.O. 1573, Dwg. # SA-2035, Jan. 20, 1986, Size 29" W. X 37" Lg. X 49" H., P/N 77006-0013 (R.H.), P/N 77006-0014 (L.H.)

- Reserv. Cap. 24 gals., stroke 6.8", 15 deg. per stroke, 5" dia shaft, Max. Torque 45,000 Lbs. at
- 1000 PSI. Hyd. Press. (max.)--450 PSIG (factory set), 6 RPH Speed (max.)
- Vickers Hyd. Pumps: Fixed Displacement (vane type), 1200 rpm. 3 gpm @ 1000 psig., #VIC-V10-2P31C20
- U.S. Electric Motor (#1) : 1-1/2 hsp., 1170 rpm., 182T frame
- Siemens Motor (#2) : 1-1/2 hsp., 1155 rpm., 182T frame

Oil Gun

Zurn Order # 1572, Design. SAO-21, S/N #3724, #2 Fuel oil, 166.5 GPH, 48 mil. BTU/Hr., 225 lbs. Steam/Hr.

- U.S. Motors: 20 hsp., 1755 rpm., 256T frame

Water Column (level indicators)

Clark Reliance Simpliport, Model P3007, Electrode-Type, 1-1/2" 1500, Dwg. # B-9133, Illum-Type, PIW-7, Vis 15/in., 120v.



AUXILIARY BOILER (Plant Heat)

Cleaver Brooks Model CB100-60#HW, S/N #L-80474, # 8501616, #2 oil-fired, Output 2,009 MBH, H₂O Cap. 1,412 lbs., Wght. 65,000 lbs.

- Paco Circ. Pumps (#1 & #2): Cat. # 16-30707-130101-2602, S/N 95R4056901, 180 GPM., 38' TDH, "VL"
- U.S. Motors Motors: 3 hsp., 575v., 1750 rpm., 182J frame, TEFC
- Westinghouse Purge Motor: 2 hsp., 3435 rpm., 145TDZ frame, TEFC
- Marathon Atomizer (Air) Motor: 2 hsp., 1725 rpm., 145T frame
- Oil Pump: 1/3 hsp., 1725 rpm., 48T frame

Stack

Atlantic Gulf 8' I.S. Dia. X 160' high (lengthened '95-DEP directive), Atlantic Gulf Dwg. # 1953-S65

- Commonwealth Dynamics Inc. (modifications- CDI Dwg's. # 140-286-3,5,6)



**For additional information call
Eric Spirtas 314-780-3742**



WATER TREATMENT SYSTEMS

Powex System (Condensate Polishing) Graver Tech. Dwg. # T-39381 & # N-24620 , Job # 12141 , P.O. # 1953-03460

- Graver Tech. Tanks- (2) 36" dia. Powdex & (1) 21" dia. Precoat
- Goulds Pumps: Model 3196 ST, 1 X 1.5-8
- Goulds Model 3996 MT, 2 X 3-10 (Vertical)
- General Electric Motors (Pumps): 3 hsp., 1745 rpm., 182T frame, TEFC
- General Electric 5 hsp., 1725 rpm., K frame, TEFC
- Philadelphia Mixer: Model: XJ-30, "Lightning"
- Reliance Motor (Mixer): .3 hsp., 1725 rpm., FB56 frame, TEFC
- Allen Bradley PLC 2/30

Clarifier

Water Tech Model: MT-40A, S/N 4334, Capacity: 40 GPM., Manf. 2/86, 120 Volt

- Dayton Pri. Floc. Assy--Gear/Motor: Model: 6K351, with 1/4 hsp., 12 rpm. , 1.67 tip speed, TEFC
- Hub City/Minarik Sec. Floc. Assy.--Gearmotor Model 1804UR-L, 0-12 rpm., 0-1.67 fps with 1/4 hsp. 1800 rpm., D.C. Motor Cat. # 505-06-027
- Ligid Metronics Floculator Mixer Pump: Model 8121-91T, 115v.
- General Electric Motor: 1/4 hsp., 1725 rpm., 48Z frame
- Philadelphia Mixer: Model: POG-34, Dwg. # 98AFD1254 Lightening
- PMC Mixer Motor: .75 hsp., 1140 rpm., 575 v., TEFC

Demineralizer

Vaponics, Inc. Model VI-24X, Two-Bed, Manuel # VI24C-X

- Columns, 24", DWG # 24835
- Pulsafeeder/Eastern
- Pumps (Volute), Model #93 ECC1-ASAEDNESS, , 1" FNPT Inlet, 3/4" FNPT Outlet, Mat'l. U-34-D
- Reliance Motor: 3/4 hsp., 3450 rpm., 30814415-287A, E54825, TEFC
- Controller: Type-C-1

Oil/Water Separator

Quantek P.O. # 1953-02459, Ref. # 86007, Type: Gravity- "0 discharge", Design Flow 100 gpm

AGITATORS & MIXERS

Waste Tank Agitator

- Philadelphia Agitator: Model POG-34, 350 rpm., Dwg. # PM-98ABD1501-1
- Baldor Motor: 3/4 hsp., 1140 rpm., F56C frame TEFC

Rinse Tank Agitator

- Philadelphia Agitator: Model POG-34 rpm., Dwg. # PM-98ABD1501
- Baldor Motor: 3/4 hsp., 1140 rpm., F56C frame, TEFC



NIAGARAWorldwide
developing from history

Niagaraworldwide.com



MAIN TRUCK DUMPER

Peerless 65' Extended Arm, 55-Ton Capacity, 63 deg., S/N 1PLN06506FPJ44710

- Hopper: P/N 1PLP00608FPJ44720, Model RH-6, size/capacity--300-480 cu.ft./min.
- Drive Motor: 50 hsp., 575 v., 1770 rpm., 326T Frame, 575v., TEFC
- SM-CYCLO *Gearbox: Model: H3255, 59-1 Ratio, Input 86.3 hsp., 1165 rpm.
- Webster "Brute" *Hopper Chains: 11' 6" x WDH 480
- Hunger *Lift Cylinders: 500" stroke, P/N 642-210
- Reliance Electric *Conveyor Drive Motor: 50 hsp., 1800 rpm., 460 v., 3-ph.
- Sumitomo "SM Cyclo" *Conveyor Drive Gearbox: P/N 3004783, 59-1 Ratio, Output 1837 rpm.
- Vickers *Hyd. Sys: Dual Pumps, 60 gpm.: Reliance Electric Dual Motors: 75 hsp., 1750 rpm., 575 v., TEFC, Tank Size: 500 gals.



PORTABLE TRUCK DUMPER

Peerless 65' Extended Arm, 50- Ton Capacity, 63 deg., S/N 1 PLN03221APK36500, # 300-1-113-11-558

- Hyco Co. Lift Cylinders: 242" stroke, S/N C30162-8.24-242-T, # 22746-480, # 22745-480, Model C-9255
- Vickers Hyd. Sys: Pump # 30V-28A-1C10, 40 gpm., Motor: 30 hsp., 575 v., 286T Frame 1800 rpm., TEFC, Tank Size: 130 gals.

DESTONER

General Kinematics Dwg. # C6928-1-1, SC 48 X 60/78 X 72', D Balanced, 2-Section, Cust. # WS91-002, Ref. # E 11848-3

- Magnetek Motor: 60 hsp., 575 v., 1800 rpm., 364 T Frame, TEFC
- New York Blower Fan: Dwg. C6928-1-2
- Magnetek Motor: 50 hsp., 575 v., 1800 rpm., 326T Frame, TEFC

BELT CONVEYORS-FUEL

Atlantic Gulf Size: 2'-23" X 41' lg., 1953-FM-3

- Truck Dumper Rec. Conv., Drive Motor: 15 hsp., 575 v., 1760 rpm., 254T Frame, TEFC
- Rex, Gearbox: Earth, # SR2AA064020, 1800-73 rpm., 24-1 Ratio
- Chains: WR 132 Mill Chain with fab. flights every 4th pitch

Hog Scalper Infeed Conv.

Atlantic Gulf Size: 5'-6-1/2" X 109'-11" lg., Dwg. # 1953-SD-FM-5

- Siemens Motor: 20 Hsp. , 575 volt, 1755 rpm.
- Rex Gearbox: Earth, Model SR2 TAA064024, 1800-73 rpm., Ratio 24-1
- Belt: 60" X 415' lg., 3-ply, 3/16" X 1/16" with vulcanized splice, (cleated)

Metal Detector Abort Conv.

Atlantic Gulf Size: 4'-7-1/4" X 30'-1/4", Dwg. # 1953-FM-26

- Drive Motor: 10 hsp., 575 v., 1750 rpm., 215T Frame, TEFC
- Rex Gearbox: Mars, # MR2IAA074024, 1800-73 rpm., 24-1 Ratio
- Belt: 48" X 70' lg., 3-ply, 3/16" X 1/16" with vulcanized splice (cleated)



For additional information **1 1** call Eric Spirtas **314-780-3742**



Hog O.F. I Conv.

Atlantic Gulf

Size: 4'-1/2" X 122' lg. Dwg. # 1953-SD-FM-10

- Drive Motor: 15 Hsp. 575 volt, 1760 rpm., 254T Frame, TEFC
- Rex Gearbox: Earth, Model SR21AA064024, 1800-73 rpm., Ratio 24-1
- Belt: 48" X 265' lg., 3-ply, 3/16" X 1/16" with vulcanized splice (cleated)

Hog O.F. II Conv.

Atlantic Gulf 4'-11-1/2" X 485' lg., Dwg. # 1953-SD-FM-11

- Reliance Drive Motor: 50 hsp., 575 v., 1770 rpm., 326T Frame, TEFC
- Rex Gearbox: Earth, 1800-73 rpm., Ratio 24-1
- Belt: 48" X 1050' lg., 3-ply, PIW, 3/16" X 1/8" MOR with vulcanized splice (cleated)

Boiler Infeed Conv.

Atlantic Gulf Size: 4'-1/2" X 442'-3" lg., Dwg. # 1953-FM-16

- Siemens Drive Motor: 25 hsp., 1760 rpm., 284T frame, 575v., TEFC
- Rex Gearbox: Earth, SR21AA064024, 1800-73 rpm., 24-1 Ratio
- Belt: 36" X 925' lg., 3-ply. 330 PIW, 3/16" X 1/8" MOR with vulcanized splice, (cleated)

Fuel Return Conv.

Atlantic Gulf Size: 3'-7" X 340'-6" lg., Dwg. # 1953-FM-19

- Reliance Drive Motor: 15 Hsp. 575v., 1765 rpm., 254T Frame, TEFC
- Rex Gearbox: Earth, Model SR21AA33045, 1800-40 rpm., Ratio 43.78-1
- Belt: 36" X 710' lg., 3-ply., 330 PIW, 3/16" X 1/8" MOR with vulcanized splice, (cleated)

I.S. Fuel Distribution Conv.

Atlantic Gulf Size: 4'-8-1/2" X 253'-6" lg., Dwg. # 1953-FM-13

- Baldor Drive Motor: 20 hsp., 575 v., 1760 rpm., 256T frame, TEFC
- Rex Gearbox: Earth, Model: SR2GAA064024, 1760 IP-73 OP., 24-1 ratio
- Belt: 48" X 560' lg., 3-ply., 330 PIW, 1/8" X 3/16" MOR with vulcanized splice (cleated)

Transfer Conv. (Fuel)

Industrial Services Size: 3'-6" X 13'-4" lg., Dwg. # 9150-400,

- Reliance Drive Motor: 3 hsp., 1750 rpm., 575 v., 184T frame, TEFC
- Falk Gearbox: Model: RK 2050F 3A, M.O. 05OU1411-51, 65.63-1 ratio
- Webster Chain: WDH 110

O.S. Fuel Distribution Conv.

Atlantic Gulf Size: 5'-7" X 511'-6" lg., Dwg. # 1953-FM-20

- Siemens Drive Motor: 50 hsp., 575 v., 1770 rpm., 326T Frame
- Rex Gearbox: Earth, Model: SR21AA0640, 1750 IP-73 OP., 24-1 ratio Legg
- Belt: 48" X 1100', 3-ply, 330 PIW, 1/8" X 1/16" MOR with vulcanized splice (cleated)



NIAGARAWorldwide
developing from history

Niagaraworldwide.com



O.S. Storage Reclaim Drag Conv.

Atlantic Gulf Size: 4' X 134' lg., Dwg. # 1953-SD-FM-21

- Drive Motor: 15 hsp., 575v., 1800 rpm., 254T Frame
- Rex Gearbox: Earth, 15 hsp., 1800-17.6 rpm., Ratio 99.38-1
- Acco Chain: 1-1/8" X 6" X 2" long link mining chain
- Atlantic Gulf Flights: 5" X 1-10" lg., Dwg. # 1953-FM-21.1

Reclaim Storage Scalper Infeed Conv.

Atlantic Gulf Size: 6'-2" X 187-9" lg., Dwg. # 1953-FM-24

- Drive Motor: 7.5 Hsp., 575 v., 1760 rpm., 213T Frame, TEFC
- Rex Gearbox: Mars, 1800-40, Ratio 43.78-1
- Belt: 60" X 420' lg., 3-ply, 330 PIW 3/16" X 1/8" MOR, with Vulcanized splice, (cleated)

Overs Conv.

Atlantic Gulf Size: 5'-5-3/4" X 55'-10" lg., Dwg. # 1953-FM-23

- Motor: 5 hsp., 575 v., 184T Frame, 1750 rpm., 575v., TEFC
- Rex Gearbox: MARS, 5 hsp., MR21AA077042, 1800-40 rpm., Ratio 43.78-1
- Belt: 48" X 124', 3-ply, 330 PIW 3/16" X 1/8" with vulcanized splice (cleated)

Reclaim Scalper Surge Bin Drag Conv.

Atlantic Gulf Size: 6'-2" X 19'-9", Dwg. # 1953-FM-22.2

- Marathon Drive Motor: 10 Hsp., 575 v., 1765 rpm., 215T Frame, TEFC
- Rex Gearbox: Earth, 10 hsp., 1800 IP-22 OP. rpm., 80.01-1 ratio
- Chain: RC160 Riveted Roller with flights every 4 pitches on center

Crossfeed Convs. (# 1 & # 2)

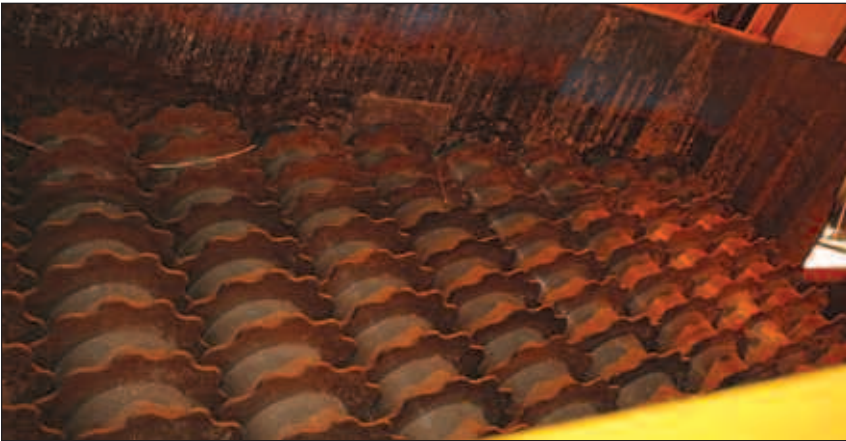
Atlantic Gulf Size: 3'-4-1/2" X 55" lg., Dwg. # 1953-M-9

- Reliance/XE Drive Motor: 15 hsp., 575v., 1770 rpm., 254T frame, TEFC
- Dodge TM/Reliance Gearbox: Model TR700, I.D. # T10713 XL, Ratio 57.7-1
- Link Belt Conv. Chain & Flights: #698 Rivetless
- Link Belt Attachements, A54
- Link Belt Fliant Wings, F4

Woodfeeder Convs. (#1 & #2)

Atlantic Gulf 3'-1-1/2" X 14'-5-1/2" lg., Dwg. # 1953-M-14

- WEO Drive Motor: 7.5 hsp., 208-230 v., 1765 rpm., 215T Frame, TEFC
- Dodge TM/Reliance Gearbox: Model TR600, I.D. # T10615 UL
- Benshaw Inverters: 7-1/2 hsp., 230v. AC., 1750 rpm., TEFC, #08121140076, RSI-015-SG-48



**For additional information call
Eric Spirtas 314-780-3742**



Woodfeeder Convs. (#3 & #4)

- Drive Motor: 7.5 Hsp., 575 v., 1750 rpm., B2111ATZ Frame
- Dodge TM/Reliance Gearbox: Model TR600, I.D. # T10615 UL
- Reliance Electric Inverter: 7-1/2 hsp., D.C. 1750 rpm., TEFC, #14C222
- Atlantic Gulf Augers: (Dual) 1'-4" dia. X 14'-10-1/2" lg., Dwg. # 1953-M-14 (#1-#4)

CONVEYOR TRIPPERS

- O.S. Distrib. & I.S. Storage** Transco 48" Belt Trippers, Model 51C-4824, dwg.1286-1 (Tripper #1-2600 ft., Tripper #2-700 ft.)
- Westinghouse Drive Motors: 2 hsp.1745 rpm., 575 v., 145T frame, TEFC
 - LinkBelt Gearboxes: # MWH 120-XB-2B-145T-72, ratio .072-1, size 120, S/N #7158807801



HOG

Dresser-Jeffery Horiz. Hog, Size- 58WBA, S/N 14051, Order #B-881857W

- U.S. Motors Drive Motor: 500 hsp., 575v., 1190 rpm., #CL2130218/860264-296
- Dresser-Jeffery Hammers: 90 lb.
- Dresser-Jeffery Hold Down: Dwg. # 280F134
- Hydro Star Hyd. Radial Piston Motor, MRH 2/3-270
- Dresser-Jeffery Feed Table Sys: Dwg. # 280F073
- Hydro Star Hyd. Radial Piston Motor, MRH 2/3-190, Ser. # 017-9391
- Link Belt/Webster Chain: WS-78P
- Dresser-Jeffery Bearing Lubrication Sys: Dwg. # 265A086: Motor: 1/2 hsp. 1800 rpm., 575 v. 3 ph., Oil Pump: # C-234712
- Tank: 28 gal. capacity
- Dresser-Jeffery Hydraulic System: Dwg. # 280F062: Motor: 50 hsp., 1800 rpm., 575 v., TEFC, Rexroth Pump: Cat. # 237093, RA 06-291/06.87, Rexroth Pump Cat. # 237092, Dresser-Jeffery Tank: 80 gal. capacity



DISC SCREENS

Radar Hog Scalper Infeed

- RDS, Size 55/9, dwg. # A-100499
- Reliance Electric Motor: 7.5 hsp. 1800 575 v. TEFC
- Dodge Gearbox: TXT 325

Fuel Reclaimer

Radar RDS, Size 55/5

- Reliance Electric Motor: 7.5 hsp. 1800 575 v. TEFC
- Dodge Gearbox: TXT 325

DIVERTER GATE ACTUATORS

I. S. Storage Distribution

Dresser/Andco Act. Prod. Posi-tork, Series 7000, Model 72-02-S, Order # 4622110, S/N 11295, Stroke 30"

- Motor: .164 hsp., 115v., 1725 rpm., 42 frame



NIAGARAWorldwide
developing from history

Niagaraworldwide.com



O.S. Storage Distribution

Dresser/Andco Act. Prod. Posi-tork, Series 7000, Model 72-02-S, Order # 4622110, S/N 11295, Stroke 30"

- Motor: .164 hsp., 115v., 1725 rpm., 42 frame

O.S. Diverter-Return Conv.

Dresser/Andco Act. Prod. Posi-tork, Series 7000, Model 72-02-S, Order # 4622110, S/N 11295, Stroke 30"

- Motor: .164 hsp., 115v., 1725 rpm., 42 frame

Crossfeeders #1 & #2

Dresser/Andco Act. Prod. Posi-tork, Series 7000, Model 72-02-S, Order # 4622110, S/N 11295, Stroke 30"

- Motor: .164 hsp., 115v., 1725 rpm., 42 frame

METAL DETECTORS

Metal Detector Co. Metal Detector: T-Series, (Shielded), Model CCW-65A, 120v.

MAGNET

Dings 45T Electronic Belt Magnet Self-Cleaning, 6.5 KW

- Motor: 3 Hsp., 575 Volt, 1755 rpm., 182T Frame

TRUCK SCALE

Cardinal/Murphy Size 70' X 10', 60-ton capacity, Model 6070-SRC,

- 3-section w/ 6-load cells

LEVEL DETECTORS--ASH SYS.

Ash Conditioner Hopper

Texas Nuclear Corp. Nuclear Level Detector System, Model 5197, PN Series,

- AshTech Dwg., # 860804

Precipitator Hoppers (#1,#2, #3, #4)

Texas Nuclear Corp. Nuclear Level Detector System, Model 5197, PN Series, Dwg., # 860804

ROTARY FEEDERS--ASH SYS.

Precip. Gathering Conv.

Ducon Conv. Tech. PERMA/FLO, 10", Type "B", Dwg. # T-477

- U.S. Motors Motor: 1 hsp., 1750 rpm., 143T frame, TEFC

Soot Hoppers (#1, #2, #3, #4)

Ducon Conv. Tech. PERMA/FLO, 6", Type "B", Dwg. # T-497

- U.S. Motors: 3/4 hsp., 115-208v., Model: C63FHF-4056, #E22022, 1725 rpm., 6 frame, TEFC

- U.S. Motors Gear Reducers: Syncrogear 1 hsp., Type: GWP, Model: E435/B046062N, 31-1 Ratio, 56 rpm.

Sand Saperators (#1 & #2)

Ducon Conv. Tech. PERMA/FLO, 6", Type "B", Dwg. # T-497

- U.S. Electric Motors: 1 hsp., 115-208v., 1745 rpm., 143T frame
- U.S. Electric Motors Gear Reducers: Syncrogear 2 hsp., Type 6 WBP, 6 Frame, Model E460/Eo824531H, 57-1 Ratio

**For additional information call
Eric Spirtas 314-780-3742**



Plenums (#1 & #2)

Ducon Conv. Tech. PERMA/FLO 6", Type B, Dwg. #T-497

- U.S. Motor: 1/2 hsp., 115/208v., 1725 rpm., 6 frame, Mod. C63FHE-4055, #E22922
- U.S. Motors Gear Reducers: Sycrogear, .75 hsp., 58-1 ratio, Model: E438/E112655IN

Dust Collector (#1 & #2)

Ducon Conv. Tech. PERMA/FLO, 10", Type "B", Dwg. # T-477

- U.S. Motors Motors: 1 hsp., 1750 rpm., 143T frame, TEFC
- U.S. Motors Gear Reducers: Syncro Gear, Type GWP, 6 Frame

Fly Ash Conditioner

Ash Tech: Size: 2' X 8'-10" overall lgth., Dwg. # G-0101

- Reliance Motor: 2 hsp., 1725 rpm., 145T frame TEFC
- U.S. Motors Variator: Model: E740/R08R165R008, 6 Fr., Type: VAM, 428-4275 rpm.

Fly Ash Leveling

Lane Supply: Size: 2'-8" I.S. X 18'-11" Lg., 304 SS Mat'l., Job #1094-604 (New 10/94)

- Baldor Motor: 3 hsp., 575v., 1725 rpm., 182TC frame, TEFC, Cat. # VM3611T-5
- ComTrac Reducer: Size/Type: TD47-1044, Mfg. # 951032, 3 hsp., 96-480 rpm., output.
- Lane Supply Flights: 1/2" X 4" X 24-1/2" lg., AR 400 Mat'l.
- Columbus McKinnon Chain: 18 mm. X 64 mm. (2 ft. lgths.)



BRIDGE CRANE

Crane Masters (KONE): 20-Ton Capacity., M.O. 9400, Model AT-200C, 2-spd., 50 ft. span, 80' runway, 46' lift.

HOISTS

Acco: 1 Ton Capacity, Wright, S/N #20-15-64896

- My-Te 1-Ton Capacity, Model AC36
- My-Te 1-Ton Capacity, Model AC36

SEPERATOR--OIL & WATER

Quantex: Gravity, 100 GPM, P.O. # 1953-02459, Ref. # 86007

AIR COMPRESSORS (MAJOR)

Quincy/Rogers Model: QA-150 (screw), S/N 6012Y

- Main Motor: 150 hsp., 600v., 3470 rpm., 405TS frame, S/N 10/16/08
- Airtek Air Dryer: Model TW770

Instrument #1, #2, #3

Quincy/Rogers Model : QDD-25WLS, 68 size, 3.5 X 4, 2-stage, reciprocating

- Zurn Desiccant Air Dryer, Model HL20, S/N 40922
- U.S Motors Drive Motor #1: 15 hsp., 575v., 1765 rpm., 254T frame, TEFC
- Baldor Drive Motor #2: 15 hsp., 575v., 1760 rpm., 254T frame



Niagaraworldwide.com



Process Air

JoyModel: TA0190EA151HJ, S/N #216375
"Twistair III"

- Marathon Motor: 40 hsp., 575v., 1765 rpm., 324TSC frame TEFC

Fire System, etc.

Quincy/Rogers Model : 340, Type: QR-25,

- Motor: 7-1/2 hsp., 1750 rpm., 213T frame, 575v., TEFC

CONVEYORS--ASH SYSTEM:

Fly Ash Leveling Conv.

Lane Supply Co. Job # 1094-604

- Siemens Drive Motor: 3 hsp., 1730 rpm., 182T frame, TEFC

Fly Ash Collect. Conv.

AshTech Size: 32" X 105'-4" long , Dwg. # G-0100

- Reliance Drive Motor: 7.5 hsp., 1760 rpm., 213T frame, TEFC
- Sumitomo Gearbox: HA8-19170
- AshTech Flights: 1/2" X 6" X 24" AR400Dwg. # A-1034
- AshTech Chain: 14 mm long-link mining chain (6 pitches between flights)

Dust Collect. Conv.

Ash Tech Size: 59'-1" lg, Dwg. # G-0099

- Teco Drive Motor: 2 hsp., 1730 rpm., 145T frame, TEFC
- Sumitomo Vari Drive: Model 38Y-86
- Ash Tech Flights: Dwg. # A-1032, 6" X 12" AR 400 Mat'l.
- Ash Tech Chain: Mining Chain, 14 mm. (long link), 5-link pairs

Submerged Conveyor

Ash Tech Size: 2'-20" X 62'-2-9/16" lg., Dwg. # A-1083

- Reliance Drive Motor: 7.5 hsp, 1760 rpm., 213T frame, TEFC
- Sumitomo Gearbox: Model 8AY87, S/N 242962, 1750 rpm., 7.5-5 hsp.
- Sumitomo Variator: SM-BEIER MA-8-19170
- Ash Tech Flights, 6" X 24"
- AshTech Chain: 14 mm, long-link mining chain,

Plenium Conv. (#1 & #2)

AshTech 9" dia. screw conv. X 14' 11-11/16" long, Dwg. # G-0097

- Brook Crompton Motor: 1 hsp., 1725 rpm., 56 C frame, Model FR
- Browning Gearbox: Model 237UL20, Ratio 60-1

Precipitator Gathering Conveyor

Thomas Conveying 12" X 49'-3/4" lg with (4) 9" dia. X 3/8" X 9'-10" lg. Augers and (1) 9" dia X 8'-7" Auger, 1/2 pitch, RH, AR 360 Matl.

- Siemens Motor: 5 hsp., 1750 rpm., 184T frame, TEFC
- Dodge Gearbox: SCXT325A



**For additional information call
Eric Spirtas 314-780-3742**



Fly Ash Conditioner (Mixer)

Ash Tech Size: 2' X 8'-10" overall lgth., Dwg. # G-0101

- Reliance Motor: 2 hsp., 1725 rpm., 145T frame TEFC

- Sumitomo Variator:

Sand Separators (Vibrating Screens -#1 & #2)

Eriez Model: HS70B with 30" X 34 tray and 12 & 20 mesh screens, #30466, 175 TPH, Controller: 575v., 60 Hz.

DUST COLLECTOR

Dust Collector Augers (#1 & #2)

Joy Multiclone (Vane-Type) 12VM, Size: 108-9, (4 sets of 24)

- Siemens Drive Motors: 2 hsp., 1745 rpm., 145T frame, TEFC

- Reliance/Dodge TM Gearboxes: Size: 145T/TU400-2, I.D. # MFC 66986-L, Ratio 86.5-1

- Atlas Metal Products Augers: 3/8" X 12" dia. X 18'-2-7/8" lg. , AR-400, (R.H.) Dwg. SK-7261-A

- Joy/Canada Kalprotect Collection Tubes: 4-7/8" ID. X 12-5/8" ID. X30" lg. NI HARD Brinell 550 matl

- Joy/Canada Kalprotect Vanes: P/N W/KN0005-NI Hard

RECLAIMERS

Industrial Services Inside Storage Reclaimer

(Over-Pile) Dwg. #D9150-100

- Vanguard Drive Motor: VM-5200, 20 hsp., 575 v., 1745 rpm., 256T frame, TEFC

- Rex Gearbox: Neptune 105000, NABA044, 1750 IP.-25 OP., 69.63-1 Ratio

- Helac Actuator: HP-220K-140 deg. swing, 14,000 ft. lbs. 2000 psi.

- ABB Invertor: ACS 550-U1_038A-4, S/N #2075102353

- Industrial Services Flights: 9" X 36" X 1/4"

- Link Belt Chain: L.B. RS953, 118' long

- Pullmaster Winch: M-10, 8000 lb. cap. @ 2000 psi., 25 fpm.

- East Shore Cable (winch) 5/8" swedged X 300' long

- Hyd. Sys.: Motor: 15 hsp., 1750 rpm., 575 v., 1750 rpm., TEFC

- Denison, Pump: 12 gpm. PV-15-2R1A-COO, Tank: 80 Gallon

Outside Storage Reclaimers "Ladders"

Atlantic Gulf Size: 4'-6" X 80'-5/8" Original lgth., Dwg. # 1953-FM-26

- Hydraulic Sys:

- Pumps: Baldor, Motors: 50 hsp., 1760 rpm., 575 v., 326T frame, TEFC, Cunningham Cylinders: "H" 8" X 30" stroke, 3-1/2" rod, #SHSHP1N33-14-S3000



NIAGARAWorldwide
developing from history

Niagaraworldwide.com



PUMPS

Diesel Fire Pump

Patterson 8 X 6 YR, 1-stg., 1500 gpm., @ 150 psig., S/N # 85PT9436-L6

- Cummins Motor: V-504-F2, Diesel, 187 hsp., 3300 rpm.
- Firetrol, Inc. Controller: FTA 1100, Dwg. # DD1100-01

Electric Fire Pump

Patterson 8 X 6 MABS, 1-stg., 1500 gpm., @ 125 psig., S/N # 85PT9437-L6

- Lincoln Electric Motor: 200 hsp., 575 v., 1780 rpm., 445TS frame, TEFC
- Firetrol, Inc. Controller: FTA 1100, FTA 1000-AA200C, Dwg. # DD1100-01

Jockey Fire Pump

Grundfos CR2-150, Model C9329, CP-2KU, 300 psig., 11 gpm. capacity

- Baldor Motor: 5 hsp., 575v., 3450 rpm., 184TC frame, TEFC

Domestic Water Pumps (#1 & #2)

PacoCat. #16-20955-130110 & 16-20956-130110, 20 GPM, 70 TDH

- U.S. Motor: 3 hsp., 1780 rpm., 182JM frame

Waste Tank Neutralization

Goulds Model 3196 ST, 2" X 1"

- Marathon Motor: 2 hsp., 575 v., 3460 rpm., 145T frame, TEFC

Concentrated Waste Water

Goulds Model 3196 ST,

- Siemens Motor: 2 hsp., 575v., 3460 rpm., 145T frame, TEFC

Raw Water Recycling

Warren Rupp "Sandpiper" Model SA-2-A, Type DB-3A, 25 GPM., 20' TDH., pH 6.0-8.0 (Air- Operated)

Concentrated Waste Water

Warren Rupp "Sandpiper" Model SA-1-A, Type SB-1-A, 10 GPM., 100' TDH., pH 5.0-10 (Air- Operated)

Rinse Tank #1 & #2

Goulds Pumps: Model ST3196, 1 X1.5-6

- #1 Siemens/ #2 Toshiba Motors: 1 hsp., 575v., 1720 rpm., F143T frame, TEFC

Hot Well Pump #1

Ingersoll-Rand Pump: 3LLR-11A

- Siemens Motor: 100 hsp., 575v., 3545 rpm., 365TS frame, TEFC

Hot Well Pump #2

Ingersoll Rand Pump: 2 X 4 X12A500 X 16 Size, 310 GPM., 473' TDH.

- Siemens Motor: 100 hsp., , 575v., 3545 rpm., 365TS frame, TEFC



For additional information call
Eric Spirtas **314-780-3742**



Plant Drain Sump (#1 , #2)

Goulds Pumps: Model 3171, Size 2.5 X 3-8 S, 1750 rpm., 200 gpm. Capacity

- U.S. Motors: 7.5 hsp., 575v., 1745 rpm., 213T frame, TEFC

Boiler Blowdown Sump \$1 & #2)

Goulds Pumps: Model 3171, Size 2.5" X 3"-7.75 Imp., 200 GPM., 60' TDH

- U.S. Motors: 1.5 hsp., 575v., 3495 rpm., 143T frame, TEFC

Cooling Tower Circ. Pumps #1 & #2

Goulds Pumps: Model 3196 MT, size 3 X 4-10H, 550 GPM., 60' TDH., S/N 773C644-1-2

- Teco Electric Motors #1: 20 hsp., 575v., 1765 rpm., 256T frame, TEFC
- U.S. Motors #2: 20 hsp., 575v. 1765 rpm., 256T frame TEFC

Condensate "Duct Drain" Pumps (#1 & #2)

Goulds Pumps: Model 3196ST, Size 1 X 1.5-6" Imp., 30 GPM., 32' TDH., S/N 773C631-1-2

- Toshiba Motors #1: 1 hsp., 575v., 1750 rpm., 143T frame TEFC
- Siemens #2: 1 hsp., 575v. 1740 rpm., 143T frame, TEFC

Chemical Tank Transfer Pump #1

Milton Roy Pump: Model 1-44-59T (metering)

- Dayton Mixer Motor: 1/4 hsp., 1725 rpm.

Chemical Tank Transfer Pump #2

Century Pump Motor: 3/4 hsp., 1725 rpm.

- General Electric Mixer Motor: 1/4 hsp., 1725 rpm., 48Y frame

Chemical Transfer Pumps #1 & #2 (Caustic)

Milton Roy Co Model: MBH402-8KPB47M4SEST11NN22, 83 GPH, 70 PSI., "Milroyal B"

- Reliance Motor: 1 hsp., 1725 rpm., FC56C frame TEFC

Chemical Transfer Pumps #1 & #2 (HCL)

Milton Roy Co. Model: MBH402-8KPB47M4SEST11NN22, 83 GPH., 70 PSI. , "Milroyal B"

- Reliance Motor: 1 hsp., 1725 rpm., FC56C frame

#2 Fuel Oil Transfer Pump (South)

Paco Model: PIP1465

- U.S. Motors Motor: 2 hsp., 1725 rpm., 145T frame, TEFC

#2 Fuel Oil Transfer Pump (North)

Viking Model: GG4195

- U.S. Motors Motor: 2 hsp., 1725 rpm., 145T frame, TEFC

Reuse H2O Transfer Pumps (#1 & #2)

Goulds Model: 3196 ST, Size 1 X 1.5- 6" Imp., 50 GPM., 70' TDH., S/N 773C642-1-2

- Siemens/Marathon Motors: 10 hsp., 575v., 3430-3450 rpm., 215T frame, TEFC



NIAGARAWorldwide
developing from history

Niagaraworldwide.com



Process Condensate Pumps (#1 & #2)

Goulds Model: 3935 S, Size: BP40 12 Stg., 3550 rpm., #B44012SNSCO312, 40 GPM., 635' TDH.
 • Siemets/Marathon Motors: 15 hsp., 575v., 3490-3550 rpm., 254TC frame , TEFC

Boiler Feedwater Pump (Electric, #1)

KSB Type: HGC 3/13 3560 rpm. Order # 39-44 998/F2, Serial # 2-208-632 731
 • U.S. Motors Motor: 700 hsp., 575v., 3570 rpm., 5809 frame, (open-face)
 • Brook Crompton Lube Oil Sys: (Motor) 1 hsp., 1680 rpm., L56C frame
 • Kracht (Pump) #KFI/16B10K

Boiler Feedwater Pump #2 (Turbine)

KSB Type: HGC 3/13, 3560 rpm., Order # 39-44 998/F2, Serial # 2-208-632 731
 • Coppus Eng. Turbine: 700 hsp., 3550 rpm., order # 85H9409, RLHA19 frame
 • Brook Crompton Lube Oil : (Motor) 1 hsp., 1680 rpm., L56C frame
 • Kracht (Pump) #KFI/16B10K
 • Dayton Lube Oil: (Turbine Brgs.) Pump: #4F655, 6592-F
 • Leeson (Motor) 3/4 hsp., 1725 rpm., D56C frame

Dearator Make Up Pumps (#1 & #2)

Goulds Model : 3196 ST, Size: 1 X 1.50-8, 50 GPM., 60'/min. TDH , S/N 773C643-1-2
 • General Electric Motors: 15 hsp., 575v., 3545 rpm., 254T frame, TEFC

Powdex Sys. Backwash Pumps (#1 & #2)

Goulds Model: 3196 MT, Size: 1.5 X 3-10" Imp., 100 GPM., 100' TDH., S/N 773C627-1-2
 • General Electric Motors: 7.5 hsp., 575v., 1750 rpm., 213T frame, TEFC

Demineralizer Backwash Pumps (#1 & #2)

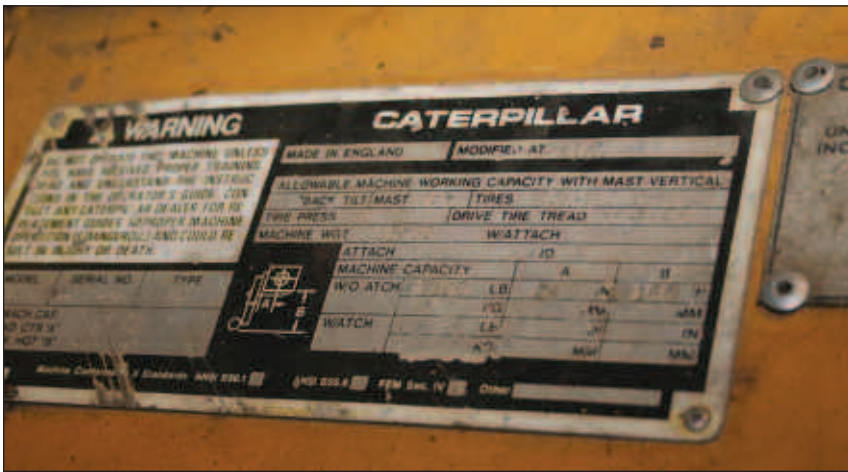
Goulds Model: 3655S, Size: 1.25 X 1.50-5, 35 GPM., 90' TDH., S/N 7736629-1-2
 • Marathon Motors: 2 hsp., 575v., 3450 rpm., 145T frame, TEFC

Demin. Filter Backwash Pumps (#1 & #2)

Goulds Model: 31655, Size: 2.50 X 2.50-6" Imp., 175 GPM., 70' TDH., S/N 773C630-1-2
 • Marathon Motors: 5 hsp., 575v., 3480 rpm., 184TCZ frame, TEFC

Demineralizer Feed Pumps (#1 & #2)

Goulds Model: 3196, Size: 1 X 1.50-6" Imp., 20 GPM., 140' TDH., S/N 773C645-1-2
 • General Electric Motors: 5 hsp., 575v., 3510 rpm., 184T frame



**For additional information call
 Eric Spirtas 314-780-3742**



Regen. Wastewater Transfer Pumps, #1 & #2

Goulds Model 3196 ST, Size: 1 X 1.5-6" Imp., 10 GPM., 20' TDH., S/N 773C628-1 thru 4

Potable Water Pumps (#1 & #2)

Goulds Model: 3196 ST, Size: 1 X 1.50-6, 50 GPM., 90' TDH., S/N 773C641-1-2

- Siemens/Baldor Motors: 10 hsp., 575v., 3450 rpm., 215T frame, TEFC

FANS

Auxiliary Fan

American Davidson Size: 419M, 10,000 CFM 20" S.P. 1942 rpm., 51.8 BHP

- U.S. Elect. Motor: 60 hsp., 575 v., 1780 rpm., 364T frame, TEFC

Induced Draft Fan

Westinghouse Model: 5KP21154A501, S/N 8428435, 550 KVA

- Westinghouse Motor: 600 hsp., 575v., Type K, 1185 rpm., P211 frame, "Phoenix"

- ABB Inverter: ACS600, Type CAN 684-0855-6000000A904

- Benschaw/Lane Supply-Rep. Soft Start: RSM6B-600-575-1, Solid State P.O. # 39134RB

Over- Fired Air Fan

American Davidson Sturtevant, 2352-C, Type A/3, Order # CF-85-20018, Dwg. # 52C-TVAF10

- U.S. Motors Motor: 300 hsp., 575v., 1775 rpm., 449TS frame, TEFC

Under- Fired Air Fan

American Davidson 8554-B, CL-4, (1200) SW (85%W), Order # CF85/20019, Dwg. # 2445D03

- U.S. Motors Motor: 150 hsp., 575v., 1185 rpm., 447TS frame, TEFC

Roof Fans-Buildings

Penn Ventilation Co. Model: RAB 5413, Tag # RPE-1, 6-Blades X 54" Overall Dia., Encasement 56" X 56"

- Motors: 7.5 Hsp., 1730 Rpm., 215T Frame, 575 Volt, TEFC

Boiler Bldg. Recirculation Fan

Twin City Fan & Blower Size: 445, Type: BAF85, S/N 86-55418-1-1

- Motor: 25 hsp., 1760 rpm., 575v., D284T frame, TEFC_

DAMPERS

Distribution Dampers #1 & #2

Zurn Industries

- U.S. Motors: 1/2 hsp., 1725 rpm., 6 Frame



Niagaraworldwide.com